

Thermistor Temperature Sensors



ACI/2252 Series
ACI/3K Series
ACI/5K Series
ACI/10K-AN (Type III)
ACI/10K-CP (Type II)



Product Description

The ACI/2252, ACI/3K, ACI/5K, ACI/10K-AN (Type III), and ACI/10K-CP (Type II) Series temperature sensors are thermistor type sensors. These sensors provide a predictable output over a specified temperature range to meet each manufacturer's required input values.

Thermistors offer high accuracy and interchangeability over a wide temperature range.

The thermistors higher resistance relative to Platinum RTD's, creates a larger signal with the same measuring current, negating most lead wire resistance problems and eliminating the need for signal conditioners.

These units are offered in Room, Room with Set Point, Room with Override, Room with Setpoint and Override, and Room w/ Setpoint, Override, and RJ11 Jack, Stainless Steel Duct and Duct without Box, Immersion, Stainless Plate, Raw, Bendable Copper and Stainless Steel Rigid Averaging, Strap-On, Bullet Probe, Button Sensor, and Outdoor Air Configurations.

Setpoint options include a linear 400 Ohm, 1K, 2K, 3K, 5K, 8.5K, 10K, 20K, or 100K slide potentiometer. An optional series resistor allows for any offset of the setpoint potentiometer. These may be either Direct or Reverse Acting.

Indication stickers for setpoint include Cool|Warm, 55 to 85, and 10 to 30°C. Others are available upon request.

Override options include a N/O switch in parallel with the sensor or a separate 2 pole terminal block for Tenant override.

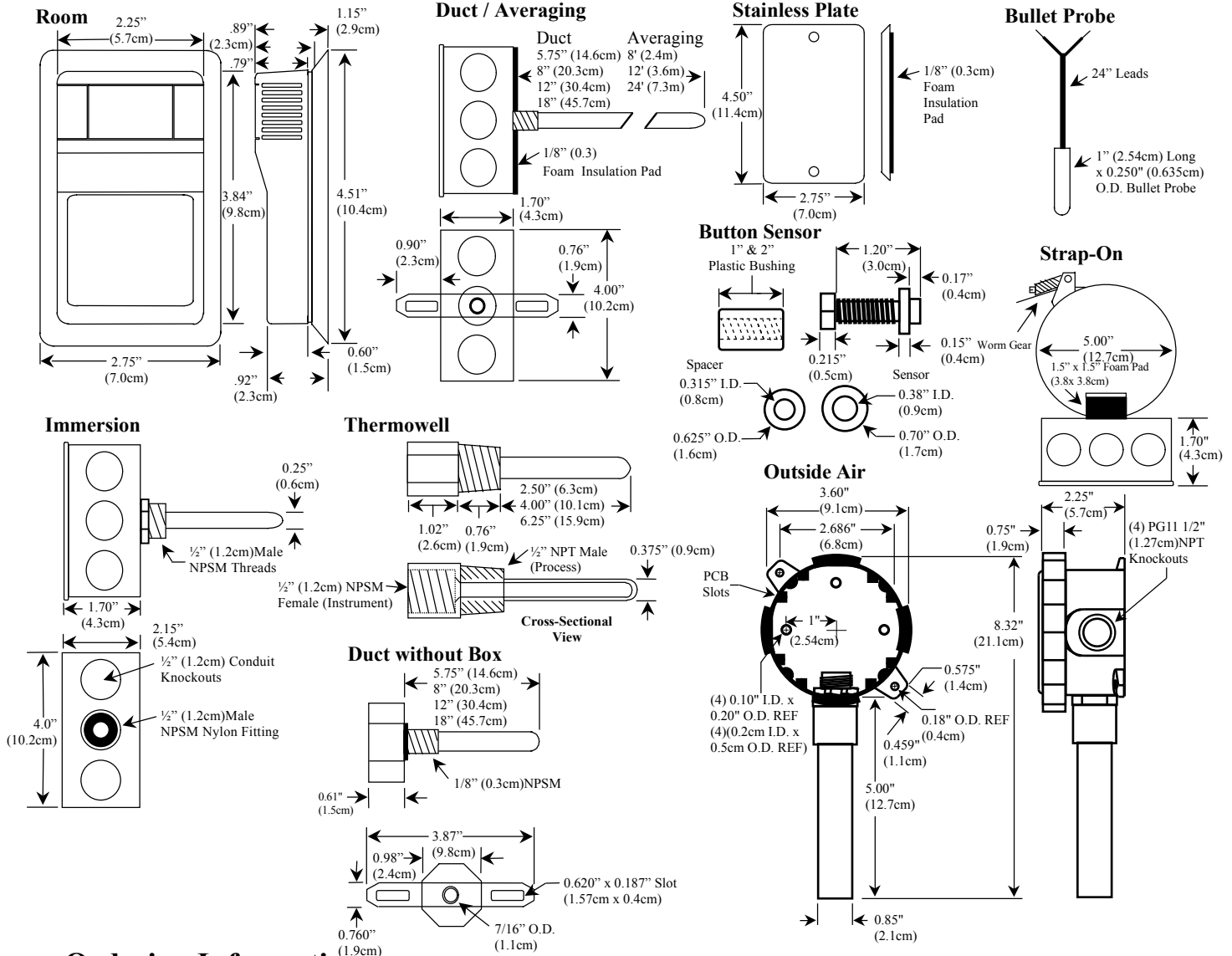
All ACI sensors can be ordered with an optional 4 pin RJ11 or 6 pin RJ12 or 1/8" RS232 Stereo communication jack with terminal blocks for remote programming.

All units come with a two year factory warranty. Please contact ACI for more information regarding these products.

Product Specifications

Output	2,252 Ohms @ 77°F(25°C)	Dissipation Constant	3 mW / °C
	3,000 Ohms @ 77°F(25°C)		
Temperature Range	5,000 Ohms @ 77°F(25°C)	Stability	+/-0.13°C
	10K Ohms @ 77°F(25°C) Type II		
	10K Ohms @ 77°F(25°C) Type III		
Interchangeability	-40 to 302°F (-40 to 150°C)	Accuracy	+/- 0.2°C (0 to 70°C)
	+/- 0.2°C (0 to 70°C)	Operating Humidity	0 to 90% RH non-condensing

Dimensions



Ordering Information

A/	Sensor	Configuration	Communication Jack	Pot Value	Setpoint Indication	Pot Action
		-	-	-	-	-
	↑	↑	↑	↑	↑	↑
	2252	R - Room	RJ4 (4 Pin RJ11)	400 Ohm	Cool Warm	DA (Direct)
	3K	RS - Room w/Setpoint	RJ6 (6 Pin RJ12)	1K	55 to 85	RA (Reverse)
	5K	RO - Room w/Override	232 (1/8" Stereo Jack)	2K	10 to 30°C	
	AN (10K-AN)	RSO - Room w/Setpoint & Override		3K	Specify	
	CP (10K-CP)	D - Duct 4", 8", 12", 18"		5K		
		DO - Duct without Box 4", 8", 12", 18"		8.5K		
		I - Immersion 2.5", 4", 8"		10K		
		A - Averaging 8', 12', 24'		20K		
		RA - Rigid Averaging 18", 24", 36"		100K		
		S - Strap - On				
		O - Outdoor Air				
		BP - 1" Bullet Probe				
		RP - Remote Probe 6' Lead wire				
		SP - Stainless Plate				
		W - Raw w/18" Leads				
		BBS - Brass Button Sensor				
		SBS - Stainless Button Sensor				

CE For CE compliance, sensor leads must be no longer than 3 meters in length. Additionally, certain product variations may not be CE compliant. Contact ACI for further details

Example: A/AN -RSO -RJ6 -20K -55 to 85 -DA or A/3K -D -8" or A/AN -RSO -232 -20K -RA -Cool/Warm